



# MONTHLY MEMBERSHIP PROGRESS REPORT

District 305 N2

Results as of: 7/31/2015

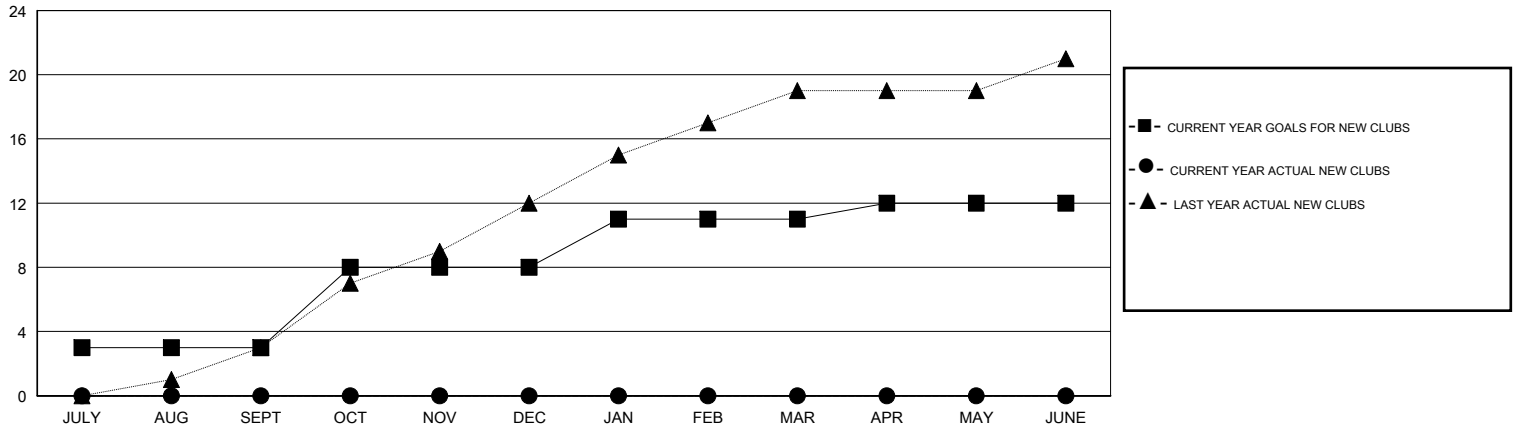
GMT: V S Kukreja

LOCATION PAKISTAN

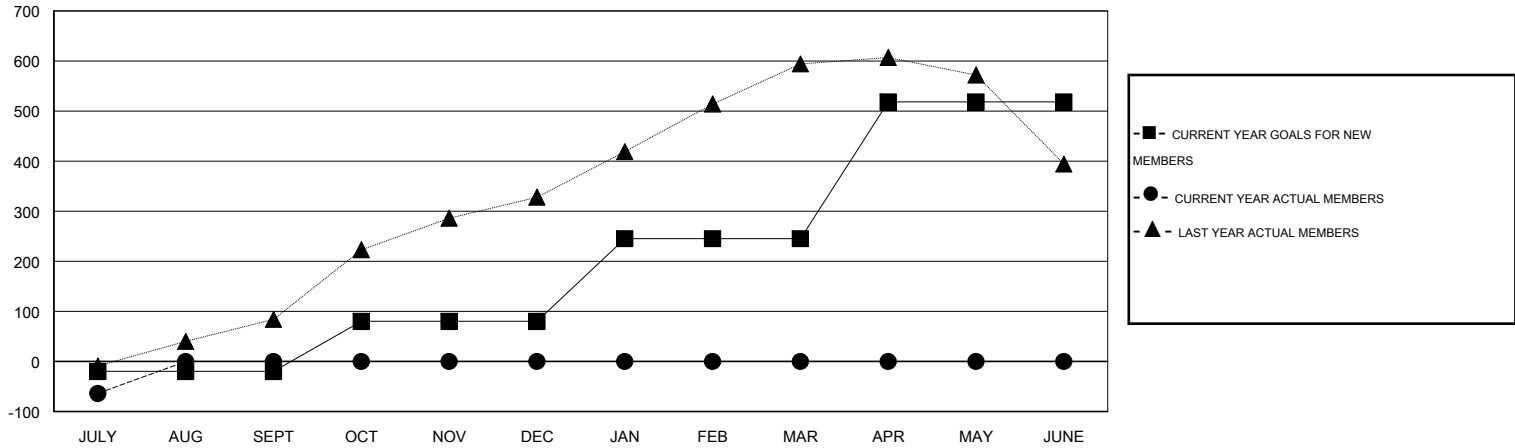
GMT CA 6

| Clubs                 |               |           |               |               | Members               |                 |                               |                 |               |
|-----------------------|---------------|-----------|---------------|---------------|-----------------------|-----------------|-------------------------------|-----------------|---------------|
| RESULTS FOR 2015-2016 |               |           |               |               | RESULTS FOR 2015-2016 |                 |                               |                 |               |
| QUARTER               | NEW CLUB GOAL | NEW CLUBS | DROPPED CLUBS | NET GAIN/LOSS | QUARTER               | NEW MEMBER GOAL | CHARTER AND NEW MEMBERS ADDED | DROPPED MEMBERS | NET GAIN/LOSS |
| JULY/AUG/SEPT         | 3             | 0         | 2             | -2            | JULY/AUG/SEPT         | -20             | 39                            | 103             | -64           |
| OCT/NOV/DEC           | 5             | 0         | 0             | 0             | OCT/NOV/DEC           | 100             | 0                             | 0               | 0             |
| JAN/FEB/MAR           | 3             | 0         | 0             | 0             | JAN/FEB/MAR           | 165             | 0                             | 0               | 0             |
| APR/MAY/JUNE          | 1             | 0         | 0             | 0             | APR/MAY/JUNE          | 273             | 0                             | 0               | 0             |

GOALS AND ACTUAL NEW CLUBS CUMULATIVE



GOALS AND ACTUAL MEMBERS CUMULATIVE



|                        |  |   |                |
|------------------------|--|---|----------------|
| DROPPED CLUBS: 2       | 11 CLUBS OF 91 ADDED 1 OR MORE NEW MEMBERS | <u>GENDER DISTRIBUTION</u>                            |                |
| <u>DROPPED MEMBERS</u> |  | MALE  | 1,742 (79.18%) |
| DECEASED               | 0  | FEMALE  | 458 (20.82%)   |
| CLUB CANCELLED         | 37   | <a href="#">CLICK HERE FOR HEALTH ASSESSMENT DATA</a> |                |
| OTHER                  | 66   |   |                |
| TOTAL                  | 103  |   |                |
|                        |  | HEAD OF HOUSEHOLD                                     | 362            |
|                        |  | NON-HEAD OF HOUSEHOLD                                 | 821            |